

Please read this manual thoroughly to familiarize yourself with the update procedures before updating the firmware.

Models covered

NT-505, NT-505-X
UD-505, UD-505-X

Supported operating systems

Windows 10 (32/64-bit)
Windows 11
As of March, 2024

NOTE

In this manual, we refer to the NT-505, NT-505-X, UD-505 and UD-505-X as "the unit".

Checking the firmware version

- 1 Turn the unit on.
- 2 Press the MENU button to open the menu screen.
- 3 Turn the input selection (INPUT or SOURCE) knob to show the firmware version (VERSION INFO).

Display example



The number shown to the right of "SYSTEM" is the firmware version.

Update procedures

The maintenance port on the unit is a Micro-B (USB 2.0) port. Use a USB cable with a connector that matches the USB port on the computer being used.

- Cables designed only for charging cannot be used for firmware updates. Always use a USB cable that supports data transmission.

Set the unit's POWER switch to OFF, and follow the procedures below. Do not connect the unit to the computer until instructed to do so.

NOTE

The screens used in these instructions are from Windows 10.

1 Uncompress the downloaded file.

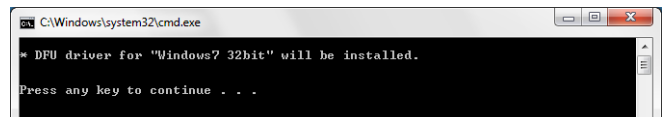
The following files will appear.

- Win_DFU_driver.exe
- NTUD505_updater_xxxx.exe or NTUD505X_updater_xxxx.exe ("xxx" is the firmware version.)

ATTENTION

The NT-505/UD-505 and NT-505-X/UD-505-X use different firmware. Check the name of the model you are using and download the correct firmware.

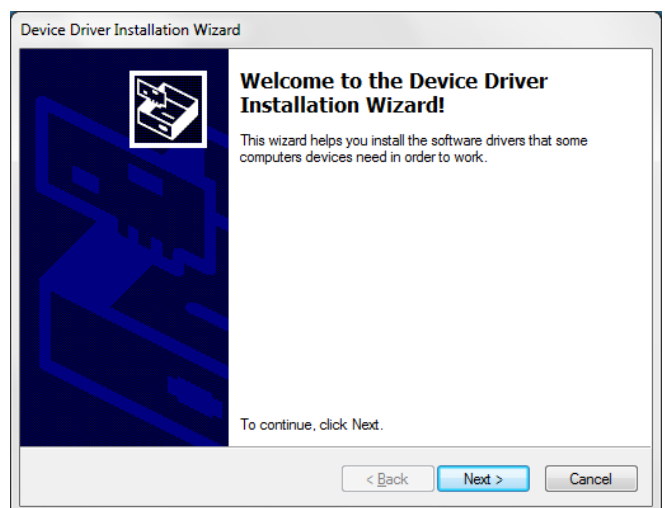
2 Double-click Win_DFU_driver.exe, and press the Enter key.



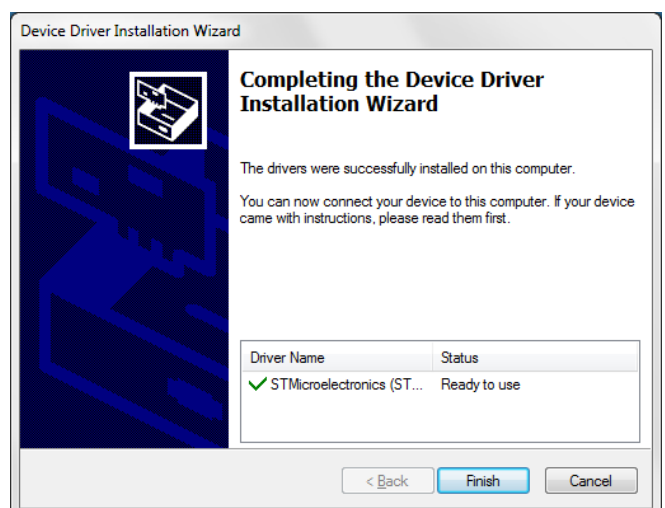
NOTE

If a "User Account Control" pop-up message appears during installation, click "Yes".

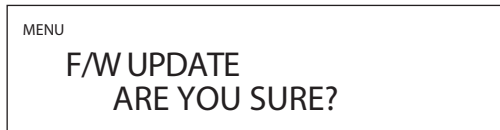
3 When the Device Driver Installation Wizard appears, click "Next".



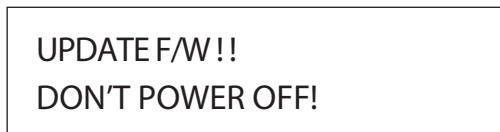
4 Click "Finish".



- 5 While pressing the input selection (INPUT or SOURCE) knob, set the unit's POWER switch to ON.**

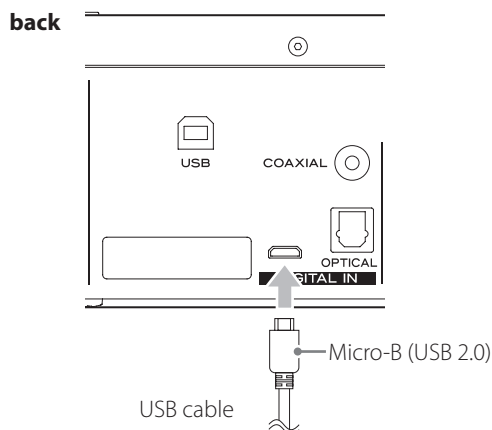


- 6 When "F/W UPDATE" appears, press the input selection (INPUT or SOURCE) knob.**

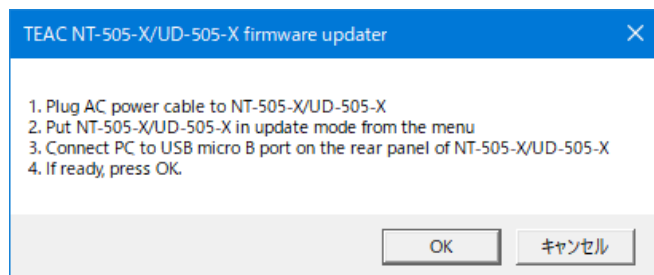


If the screen shown above does not appear, set the unit's POWER switch to OFF, and repeat step 5.

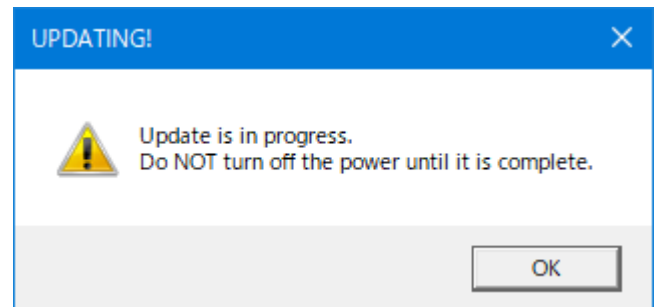
- 7 Use a USB cable to connect the computer to the maintenance port (Micro-B (USB 2.0)) on the back of the unit.**



- 8 Double-click NTUD505_updater_xxxx.exe or NTUD505X_updater_xxxx.exe, and click OK.**

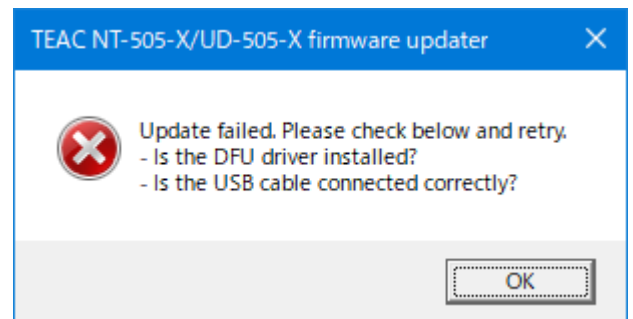


The following screen will appear when the update starts. Wait until the update completes.



NOTE

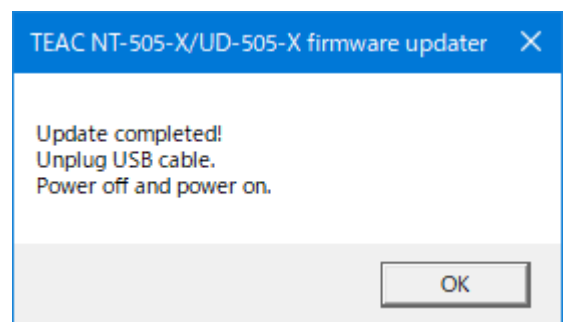
The following screen will appear if the unit is not recognized by the computer. Click OK to close the window.



Check the connection between the computer and the unit, and repeat step 8.

- Cables designed only for charging cannot be used for firmware updates. Use a USB cable that is capable of data transmission.
- Connecting to a different USB port on the computer might allow it to recognize the unit.

- 9 When "Update completed" appears, disconnect the USB cable and click OK.**



- 10 Set the unit's POWER switch to its OFF position.**

Follow the procedures in "Checking the firmware version" on the previous page and check the firmware version.