

Please read this manual thoroughly to familiarize yourself with the update procedures before updating the firmware.

Model covered

PE-505

Equipment used

Windows computer (with built-in USB 2.0 port)
USB cable

- The maintenance port on the unit is a Micro-B (USB 2.0) port. Use a USB cable that has a Micro-B (USB2.0) connector and a connector that matches the USB port on the computer being used.
- Use a USB cable that supports data transmission. (Cables designed only for charging cannot be used.)

Supported operating systems

Windows 10 (32/64-bit)
Windows 11
As of March, 2024

1. Check the firmware version

1 While pressing the MONO and SUBSONIC filter buttons, turn the unit on.

2 When all indicators on the front of the unit light, press the MONO button.

The indicators will light about 3 seconds after the unit is turned on.

The lit Impedance knob indicators show the version.

Version	100pF	47 Ω	10 Ω
1.00	Lit	Unlit	Unlit
1.01	Lit	Unlit	Lit
1.04	Lit	Lit	Unlit

3 After checking the version, put the unit into standby.

Microsoft and Windows are either registered trademarks or trademarks of Microsoft Corporation in the United States and/or other countries.

Other company names and product names in this document are the trademarks or registered trademarks of their respective owners.

2. Install the DFU driver

Set the unit's STANDBY/ON switch to STANDBY, and begin the following operations before connecting it with the computer.

NOTE

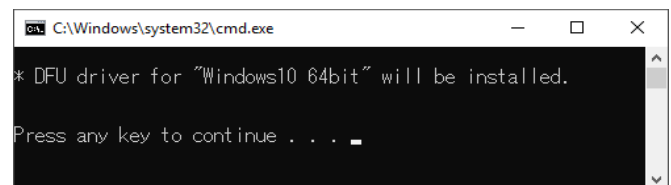
- After installing the DFU driver on the computer once, installing it again will not be necessary. If installation is complete, proceed to "3. Update the firmware".
- The screens used in this example are from Windows 10.

1 Uncompress the downloaded file.

The following files will be created.

- Win_DFU_driver.exe
- PE-505_updater_xxxx.exe (xxxx is the firmware version)

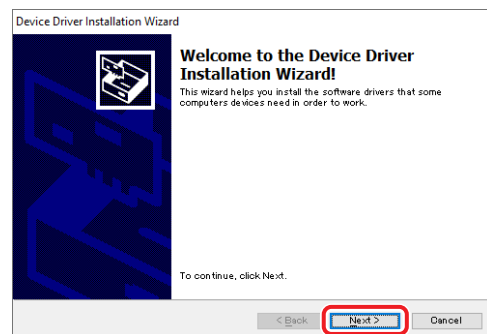
2 Double-click Win_DFU_driver.exe, and press the Enter key.



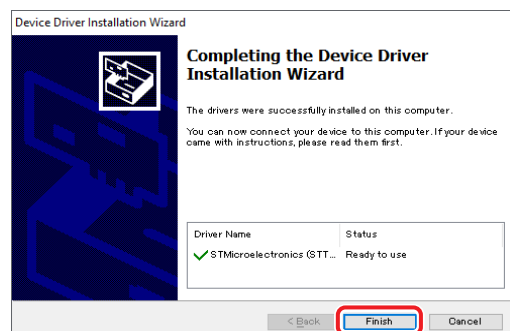
NOTE

If a "User Account Control" pop-up message appears during installation, click "Yes".

3 When the Device Driver Installation Wizard appears, click "Next".



4 Click "Finish".



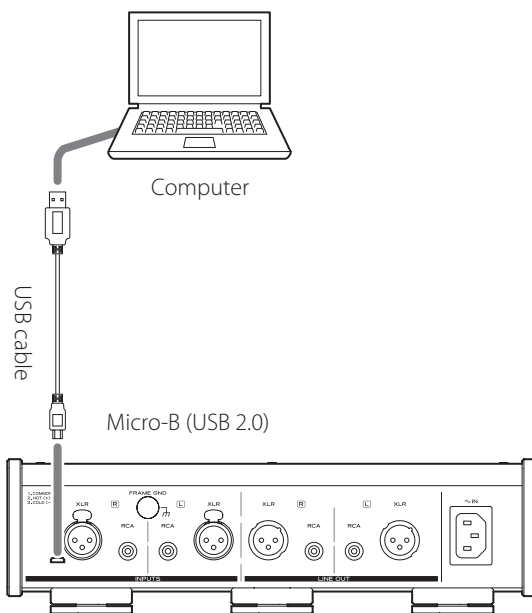
3. Update the firmware

The maintenance port on the unit is a Micro-B (USB 2.0) port. Use a USB cable that has a Micro-B (USB2.0) connector and a connector that matches the USB port on the computer being used.

- Cables designed only for charging cannot be used for firmware updates. Always use a USB cable that supports data transmission.

1 Put the unit into standby, and disconnect everything including the power cord from it.

2 Use a USB cable to connect the computer to the maintenance port (Micro-B (USB 2.0)) on the back of the unit.



- Refer to the unit's operation manual for the location of the maintenance port.
- Cables designed only for charging cannot be used. Always use a USB cable that supports data transmission.

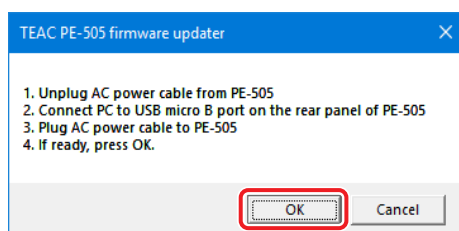
3 Connect the power cord to the unit.

Connecting the power cord while the unit is connected to a computer by USB puts the unit into update mode. At this time, leave the STANDBY/ON switch set to STANDBY.

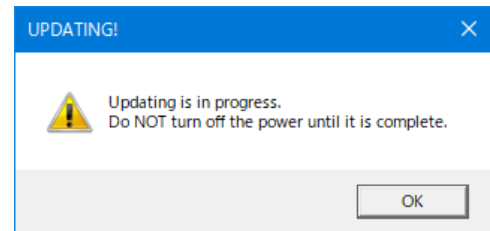
- The USB driver will be installed on the computer automatically. Wait until it is complete. When first connected, loading the driver takes some time.

4 Execute PE-505_updater_xxxx.exe.

5 Click "OK".



6 The following will appear during the update.

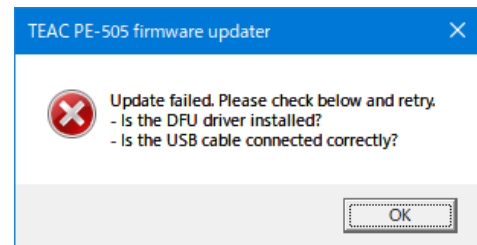


Do not disconnect the unit's power cord or the USB cable while updating. Doing so could make the unit not operate properly.

- Click the OK button to close the window. The update will continue in the background.

NOTE

The following screen will appear if the unit is not recognized by the computer.



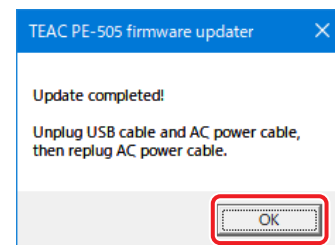
If the screen above appears, check the following item and repeat the procedures from step 1.

- The DFU driver is installed.

ATTENTION

- Cables designed only for charging cannot be used for firmware updates. Always use a USB cable that supports data transmission.
- Connecting to a different USB port on the computer might allow it to recognize the unit.

7 When "Update completed!" appears, click "OK" to close the window.



8 Disconnect the USB cable and power cord.

This will switch the unit from update mode back to normal operation mode.

- Follow the procedures in "1. Check the firmware version" on the previous page to check the firmware version.