

TASCAM

D01318720C

TASCAM SS250 CONTROL

USER'S MANUAL



TASCAM TASCAM SS250 CONTROL

Contents

Overview	2
Conventions used in this manual	2
Trademarks and copyrights	3
Operating environment	3
iOS devices.....	3
Android devices	3
Windows	3
Mac.....	3
Unit and application versions	3
Installing SS250 CONTROL.....	4
iOS/Android devices	4
Windows	4
Mac.....	5
Working with Gatekeeper	6
Connecting the SS-R250N and SS250 CONTROL.....	7
Screen overviews.....	7
Changing screens.....	7
Home Screen.....	8
Recording Screen	10
Settings Window	11
TIME SEARCH window	11
MENU screen.....	12
INFORMATION screen	13

TASCAM SS250 CONTROL is a remote control application for smartphone and tablet devices that can be used to operate the TASCAM SS-CDR250N/SS-R250N by Wi-Fi®.

Before using this application, read the Software Use License Agreement and agree to its terms.

Overview

- Enables remote control, changing menu settings and monitoring the status of SS-R250N units
 - Transport control possible
 - Supports basic recording, playback, track skipping and searching backward/forward operations, as well as adding and moving between marks
 - Enables monitoring of recording and playback levels
 - Various menu settings can be made, including the playback mode, repeat and other playback settings
 - Monitoring of operations with servers, including file uploading and downloading, is possible
- Monitoring and remote control is possible regardless of where the main unit is installed
- The free application can be downloaded for iOS from the App Store, for Android from Google Play and for Windows and Mac from the TASCAM SS250 CONTROL product page.
- Panel lock function included to prevent accidental operation of the application

Conventions used in this manual

In this manual, we use the following conventions:

- Messages that appear on the iPhone, iPad or Android device are shown in quotes like this: **"INFO"**.
- Information shown on the SS-CDR250N/SS-R250N display is written with a typeface like this: **PLAY AREA**.
- Smart phones, tablets and computers are called "devices".
- As necessary, additional information is provided under TIP, NOTE and CAUTION headings.

TIP

These are tips about how to use the software.

NOTE

These provide additional explanations and describe special cases.

CAUTION

Failure to follow these instructions could result in injury, damage to equipment or lost recording data, for example.

Trademarks and copyrights

- TASCAM is a trademark of TEAC CORPORATION, registered in the U.S. and other countries.
- Android and Google Play are trademarks of Google Inc.
- Apple, Mac, Mac OS, macOS, iPad and App Store are trademarks of Apple Inc.
- The App Store is a service mark of Apple Inc.
- IOS is a trademark or registered trademark of Cisco in the U.S. and other countries and is used under license.
- Microsoft, Windows, Windows Vista and Windows Media are either registered trademarks or trademarks of Microsoft Corporation in the United States and/or other countries.
- Other company names, product names and logos in this document are the trademarks or registered trademarks of their respective owners.

Operating environment

iOS devices

Apple iOS devices operating on iOS 9 or iOS 10

Android devices

Android devices operating on Android version 4.1–7.1.1

Windows

Supported operating systems

Windows 10 (32bit, 64bit)
Windows 8.1 (32bit, 64bit)
Windows 7 SP1 (32bit, 64bit) or newer

NOTE

It cannot be used with Windows 8, Windows XP or Windows Vista.

Computer hardware requirements

Computer running Windows

CPU

Intel Core i series or newer recommended

Memory

2 GB or more (at least 4 GB recommended)

Open disc space

At least 150 MB

Screen resolution/number of colors

1280×1024 (SXGA) or higher
True Color (32-bit) recommended

Mac

Supported operating systems

macOS Sierra (10.12)
OS X El Capitan (10.11)

Supported models

Macs with Intel Core i/Core M series processors

Memory

2 GB or more (at least 4 GB recommended)

Open disc space

At least 150 MB

Screen resolution

1280×1024 (SXGA) or higher

Unit and application versions

SS-CDR250N/SS-R250N unit: Ver 1.10*
Version of this application: 1.1.0

- * We recommend that you always use the latest firmware for the SS-CDR250N/SS-R250N unit. For the latest firmware, visit the TEAC Global Site (<http://teac-global.com/>).

NOTE

A separate Wi-Fi router is necessary to operate the SS-CDR250N/SS-R250N using SS250 CONTROL.

TASCAM TASCAM SS250 CONTROL

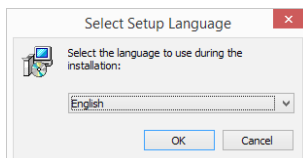
Installing SS250 CONTROL

iOS/Android devices

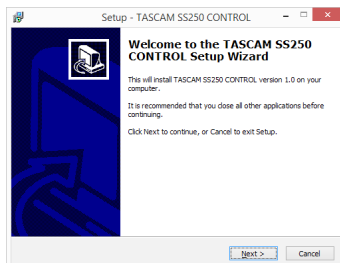
1. Connect the smartphone or tablet device to the Internet.
2. Search for the SS250 CONTROL app on Google Play for an Android device or on the App Store for an iOS device. Then, download and install it.
- Please be aware that you are responsible for any transmission costs related to Internet connection.

Windows

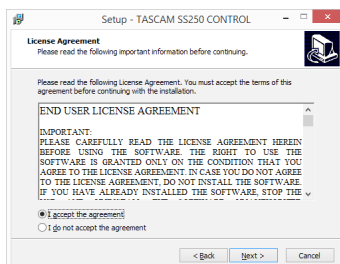
1. Connect the computer you are using to the Internet.
2. Download the SS250 CONTROL application from the TEAC Global Site (<http://teac-global.com>).
 - Be aware that transmission charges related to using the Internet connection are your responsibility.
3. Decompress the file after downloading, and double-click the TASCAM_SS250 CONTROL_1.00.exe file to launch the installer ("1.00" is the version).
When the installer language selection screen opens, select the language you want and click the "OK" button.



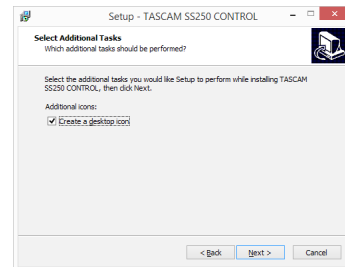
4. When the first screen of the installer appears, click the "Next >" button to continue.



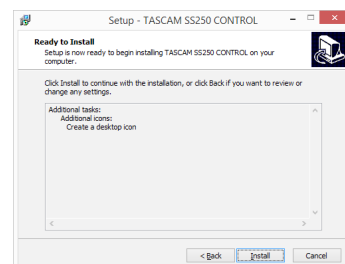
5. The software license agreement screen opens. Select "I accept the agreement" to agree to the license, and click "Next >" to continue.



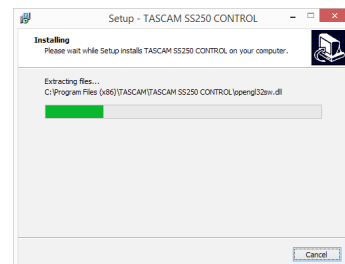
6. The shortcut creation screen opens. Put a check (✓) in the box next to "Create a desktop icon" to create a shortcut on the desktop, and click "Next >" to continue.



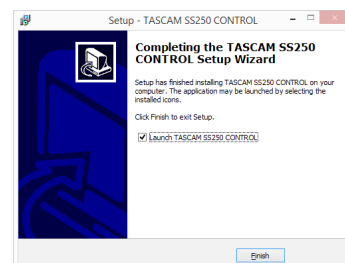
7. The installation confirmation screen opens. Confirm the installation details, and click the "Install" button.



8. The installation progress screen opens. To cancel installation at this time, click the "Cancel" button.



9. The installation completion screen opens. To launch TASCAM SS250 CONTROL immediately, click the "Finish" button. To launch TASCAM SS250 CONTROL later, remove the check (✓) from the box next to "Launch TASCAM SS250 CONTROL", and then click the "Finish" button.



This completes installation of the software.

TASCAM TASCAM SS250 CONTROL

Mac

NOTE

While installing the Mac TASCAM SS250 CONTROL application, a warning message like this might appear: ***"TASCAM_SS250 CONTROL.pkg" can't be opened because it was not downloaded from the Mac App Store.*** If a message like this appears, follow the instructions in Working with Gatekeeper page 6 and then proceed with the installation.

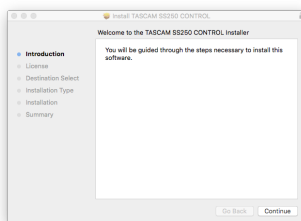
1. Download the latest TASCAM SS250 CONTROL Mac application from the TEAC Global Site (<http://teac-global.com/>) and save it on the computer to be used with the unit.
2. Double-click ***"TASCAM_SS250 CONTROL_installer_vXXX.dmg"*** ("XXX" is the version number), which is the saved disk image file for the Mac TASCAM SS250 CONTROL application, and double-click ***"TASCAM_SS250 CONTROL.pkg"*** inside the folder that opens.



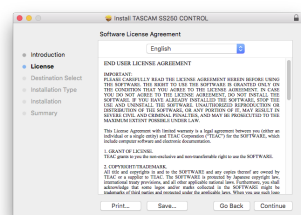
NOTE

Depending on the computer's settings, the downloaded zip file might not have opened automatically. In this case, open the zip file first and then double-click the disk image file.

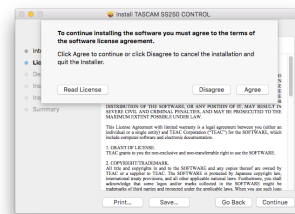
3. When the installer starts, click the ***"Continue"*** button.



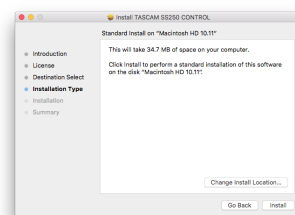
4. Next, select the desired language and click the ***"Continue"*** button.



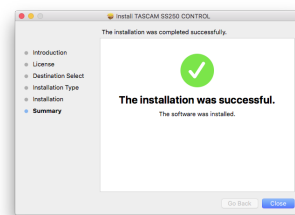
5. Click the ***"Read License"*** button and check the contents of the Software License Agreement. you agree to the contents, click ***"Agree"***. Then, click the ***"Next"*** button.



6. Next, click the ***"Install"*** button to start installation.



7. The following screen appears when installation has completed. Click the ***"Close"*** button.



This quits the installer.

TASCAM TASCAM SS250 CONTROL

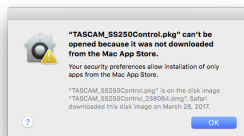
Working with Gatekeeper

When using Mac OS X, depending on the Gatekeeper security function setting, a warning message might appear during installation.

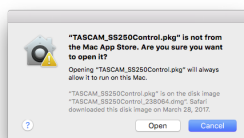
The solution depends on the warning message shown. See the following explanations for details.

When the Gatekeeper setting is “Allow applications downloaded from: the Mac App Store”

The following security warning might be shown: “TASCAM_SS250 CONTROL.pkg” can’t be opened because it was not downloaded from the Mac App Store.”

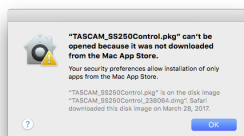


In this case, click the “OK” button to close the message. Then, control-click (or right-click) the file and click “Open”. When the ““TASCAM_SS250 CONTROL.pkg” can’t be opened because it was not downloaded from the Mac App Store. Are you sure you want to open it?” security warning message appears, click the “Open” button.



This warning message might also appear when the Gatekeeper setting is something other than “Allow applications downloaded from: Mac App Store.”

The following security warning might be shown: “TASCAM_SS250 CONTROL.pkg” can’t be opened because it was not downloaded from the Mac App Store.

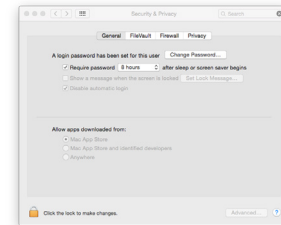



In this case, copy the file from the folder where it is to the desktop or another folder, and then open it. Alternatively, change the Gatekeeper settings to “Allow apps downloaded from: App Store and identified developers” and try opening it again.

Changing the Gatekeeper setting

The Gatekeeper setting can be changed using the “Allow apps downloaded from:” item on the “General” page of the “Security & Privacy” pane of the System Preferences.

To change this, you must click the lock icon (🔒) at the bottom left and enter a password to unlock the settings.



This setting will lock again when you click the  button or type command-Q to close the System Preferences or when you click “Show All” to close the open pane.

CAUTION

Changing the Gatekeeper setting could result in security risks.

If you changed the Gatekeeper setting to decrease security (use one of the lower settings), set it back to the original setting after installing the application.

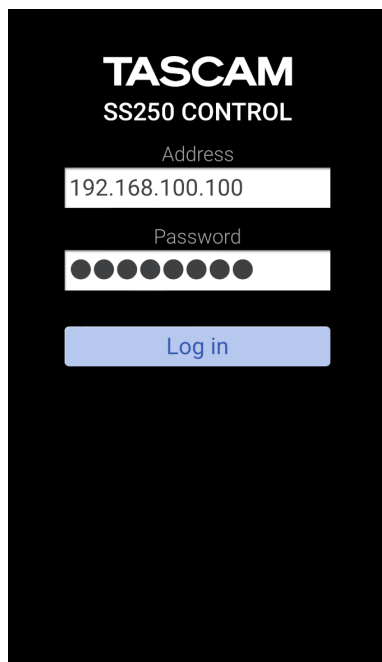
TASCAM TASCAM SS250 CONTROL

Connecting the SS-R250N and SS250 CONTROL

1. Power the SS-CDR250N/SS-R250N unit and connect it to a router with a LAN cable.
2. Confirm the IP address and password assigned to the SS-CDR250N/SS-R250N unit on the NETWORK 1 menu page.

NETWORK 1: LINKED	13/21
[MAC ADDRESS	00-02-EE-81-90-05]
[IP ADDRESS	192.168.100.100]
[DNS ADDRESS	0.0.0.0]
IP SETUP	STATIC
DNS SETUP	STATIC

3. Connect the device to the network by Wi-Fi or with a wired connection.
4. Launch SS250 CONTROL.
5. When the login window appears, input the IP address of the SS-CDR250N/SS-R250N unit to be operated in the first line and its password in the second line.
The password is case sensitive.
6. Tap "Log in".
The SS250 CONTROL Home Screen will open when the connection between the SS-CDR250N/SS-R250N unit and the device is established.



NOTE

When reconnecting after the first time, the app will launch with the data input for the previous connection.

Screen overviews

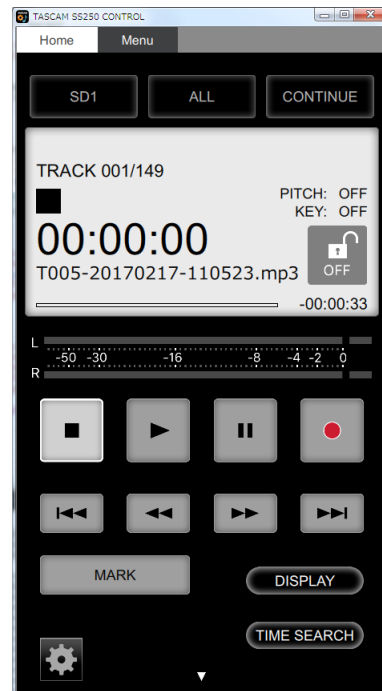
Changing screens

iOS/Android

When using iOS or Android, swipe left or right to switch between Home and Menu screens.

Windows/Mac

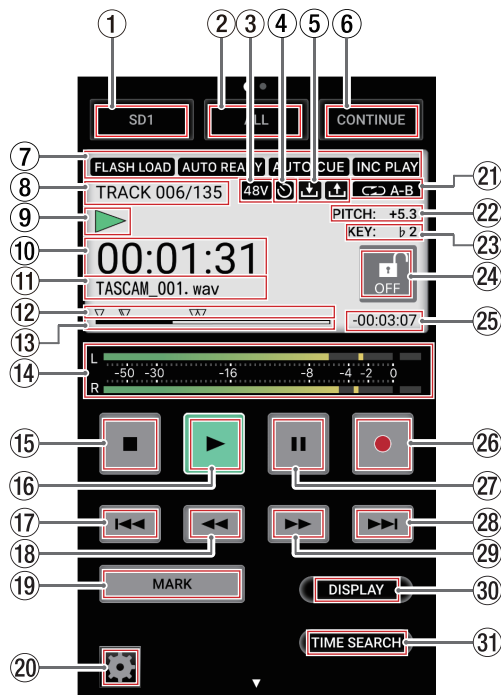
When using Windows or Mac, use the tabs at the top of the screen.



Click the *Home* or *Menu* tab to open the corresponding screen.

TASCAM TASCAM SS250 CONTROL

Home Screen



- ① **Current media status/selection button**
This shows the media currently selected in the unit.
Tap it to open a drop-down list where you can select the current media.
- ② **Playback area status/selection button**
This shows the current playback file area.
Tap it to open a drop-down list where you can select the playback area.
- ③ **Phantom power supply status**
When phantom power is on, the **48V** icon appears.
- ④ **Timer event setting status**
The **Y** icon appears when the timer event function is on.
- ⑤ **Upload/download status**
Icons appear when the unit is uploading or downloading files, for example, over the network.
 - 📶: Uploading
 - 📶: Downloading
- ⑥ **Playback mode status/selection button**
This shows the current playback mode.
Tap it to open a drop-down list where you can select the playback mode.
- ⑦ **Playback function setting status area**
Icons appear for the playback functions that are currently on.

Indicator	Meaning
FLASH LOAD	Appears when already flash loaded
AUTO READY	Appears when auto ready function is on
AUTO CUE	Appears when auto cue function is on
INC PLAY	Appears when incremental playback function is on

- ⑧ **Track number/total number of tracks**
This shows the current track number and total number of tracks in the current playback area.

- ⑨ **Unit status**
This icon shows the operation status of the unit.

Icon	Meaning
■	Stopped
▶	Paused
▶	Playing back

- ⑩ **Elapsed time**
The elapsed time from the beginning of the file appears as hours: minutes: seconds.
During jog playback, 10msec increments are also shown.
Touch the **DISPLAY** button (③①) to switch between showing the elapsed time from the beginning of the track and the elapsed time of the playback area.

- ⑪ **Track name**
This shows the title of the current track.

- ⑫ **Marks**
An **b** icon is shown at each mark.

- ⑬ **Playback position bar**
The current playback position is shown by a bar.
As playback progresses, the bar extends from the left.
Touch the **DISPLAY** button (③①) to switch between showing the elapsed time from the beginning of the track and the elapsed time of the playback area.
If marks have been added, mark icons will appear above the bar.

- ⑭ **Level meters**
This area shows the levels of the input and playback signals.

- ⑮ **■ button**
 - Press to stop playback or recording.
 - When the playback area is set to **PROGRAM** and playback is stopped, press this to clear the entire program.

- ⑯ **▶ button**
 - Press when stopped or in playback standby to start playback.
 - Press when in recording standby to start recording.
 - This button lights during playback and recording.
 - This button blinks during jog playback.

- ⑰ **I<<< button**
When the home screen is open, the unit is playing back or in playback standby, and a mark has been added, press to move to the previous mark. If there are no marks, press to skip to the previous track.

- ⑱ **<<< button**
 - Press when playing back or in playback standby to skip by the amount of time set by the time skip function.
 - When playing back or in playback standby, press and hold this button to search backward while outputting audio (review).
 - When the playback area is set to **FOLDER**, press when stopped to change the current folder.
 - When the playback area is set to **PLAYLIST**, press when stopped to change the current playlist.

19 MARK button

Press to add a mark when the Home Screen is open and the unit is stopped, recording, playing back, or in recording or playback standby.

If the current media is set to "CD", the MARK button will not appear.

20 Settings button

Press when stopped, paused or playing back to open the settings window. (see "Settings Window" on page 11)

21 Repeat playback setting status

An icon appears when the repeat playback function is on.

 : Repeat playback

 : A-B repeat playback

22 Pitch control function status

This shows whether the pitch control function is on or off and its current setting.

23 Key control function status

This shows whether the key control function is on or off and its current setting.

24 Screen lock button

Double-tap this button to lock operation of the application and change this icon to "ON".

Double-tap this icon when it is "ON" to unlock the screen.

25 Remaining time display

This shows the remaining time (hours: minutes: seconds).

Touch the **DISPLAY** button (30) to switch between showing the elapsed time from the beginning of the track and the elapsed time of the playback area.

26 ● button

- Press when stopped to start recording standby.
- When recording, press to divide the recording by creating a new file (increment the track number).
- This button lights when recording or in recording standby.

27 II button

- Press when stopped or playing back to enter playback standby.
- Press when recording to start recording standby.
- This button lights when in playback standby or recording standby.
- This button blinks during jog playback.
- Press this button when in playback standby to locate to the call point (where playback was last started from playback standby) and stay in playback standby.

28 ►►I button

When the home screen is open, the unit is playing back or in playback standby, and a mark has been added, press to move to the next mark. If there are no marks, press to skip to the next track.

29 ►► button

- Press when playing back or in playback standby to skip by the amount of time set by the time skip function.
- When playing back or in playback standby, press and hold this button to search forward while outputting audio (cue).
- When the playback area is set to FOLDER, press when stopped to change the current folder.
- When the playback area setting is PLAYLIST, press when stopped to change the current playlist.

30 DISPLAY button

Press to change the following display modes.

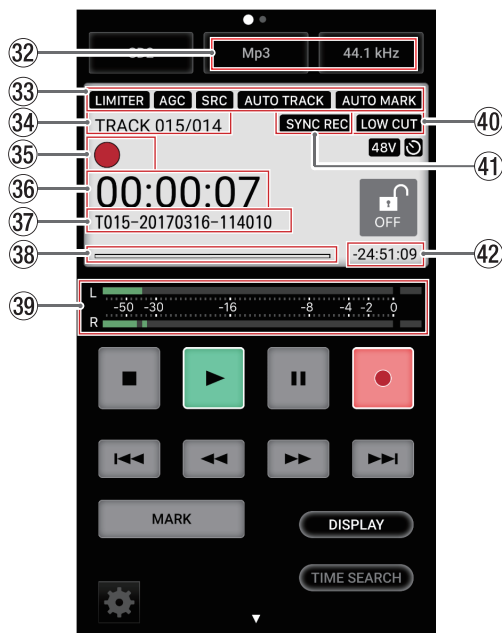
- 10 Elapsed time
- 13 Playback position bar
- 25 Remaining time display

31 TIME SEARCH button

This opens the TIME SEARCH window. (see "TIME SEARCH window" on page 11)

TASCAM TASCAM SS250 CONTROL

Recording Screen



- ③⑧ **Track recording position bar**
The current recording position is shown by a bar. As recording progresses, the bar extends from the left.
- ③⑨ **Input levels**
The input sound levels are shown.
- ④① **Low cut filter setting status**
The **LOW CUT** icon appears when the low-cut filter is set.
- ④① **Sync recording function setting status**
The **SYNC REC** icon appears when the sync recording function is on.
- ④② **Remaining track recording time**
This shows the remaining recording time until the maximum file size (2 GB) is reached (in hours: minutes: seconds).

- ③② **Recording format setting status**
Set the sampling frequency and file format combination for recording.
- ③③ **Recording function setting status area**
Icons appear for the recording functions that are currently on.

Indicator	Meaning
LIMITER	Appears when the LIMITER dynamics function is on
CMPSOFT	Appears when the COMP_SOFT dynamics function is on
CMPHARD	Appears when the COMP_HARD dynamics function is on
AGC	Appears when the automatic gain control function is on
SRC	Appears when the sampling rate converter is on
AUTO TRACK	Appears when the automatic track incrementation function is on
AUTO MARK	Appears when the automatic mark function is on

- ③④ **Track number/total number of tracks**
This shows the total number of tracks and the number of the track currently being recorded.
- ③⑤ **Recorder operation status**
This icon shows the operation status of the unit.

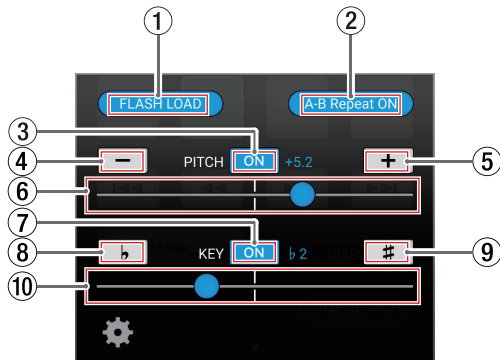
Icon	Meaning
●	Recording standby or recording paused
●	Recording

- ③⑥ **Elapsed track recording time**
This shows the elapsed time of the recorded file (hours: minutes: seconds).
Touch the **DISPLAY** button (②⑦) to switch between showing the elapsed track recording time and the total elapsed time.
- ③⑦ **Track name**
This shows the title of the track being recorded.

Settings Window

Press the Settings button on the Home Screen when stopped, playing back or in playback standby to open the Settings Window.

Press the Settings button again or tap outside the Settings Window to close it.



① FLASH LOAD button

Press this button to make the unit flash load.

② A-B Repeat ON button

Use this button to set the A-B repeat function of the unit.

Press this button when "Set A" appears on it and the unit is playing back or in playback standby to set the repeat playback interval start point (A).

This will change the button to "Set B".

Press this button again at the position where you want to set the repeat playback end point (B) and start A-B repeat playback.

This will change the button to "A-B Repeat ON".

Press this button again to clear the set A-B interval and turn A-B repeat playback off.

③ PITCH ON button

Press this button to turn the pitch control function on/off.

④ PITCH - button

Press this button to change the pitch in 0.1% increments.

⑤ PITCH + button

Press this button to change the pitch in 0.1% increments.

⑥ PITCH slider

This changes the pitch in 0.1% increments.

⑦ KEY ON button

Press this button to turn the key control function on/off.

⑧ KEY - button

Press this button to change the key.

⑨ KEY + button

Press this button to change the key.

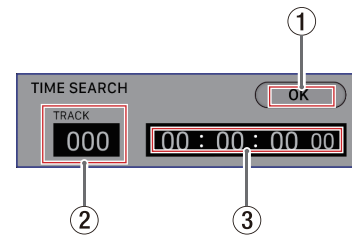
⑩ KEY slider

Use this to change the key.

TIME SEARCH window

Press the **TIME SEARCH** button on the Home Screen to open the **TIME SEARCH** window.

Use this screen to move to set points when stopped, playing back or in playback standby.



① OK button

Press this button to move to the set point.

② TRACK number

Input the number of the track in which you want to move to a point.

③ Time from track beginning

Enter the time from the track beginning that you want to move to in hours, minutes, seconds and 10msec increments, using two digits for each.

TASCAM TASCAM SS250 CONTROL

MENU screen

Swipe left on the Home Screen to open the **MENU** screen.

MENU	
PLAY	
PLAY AREA	ALL
PLAY MODE	CONTINUE
REPEAT	ON
AUTO CUE	
MODE	ON
LEVEL	-54dB
AUTO READY	ON
INCREMENTAL PLAY	ON
MONO MIX	OFF
DUCKING	
MODE	OFF
THRESHOLD	-6dBFS

On the **MENU** screen, you can set various menu items for the unit.

The menu items that can be set are as follows.

For details about each menu item, see “Menu structure” in “2 – Names and Functions of Parts” of the Owner's Manual for the unit.

Menu item	
PLAY	
	PLAY AREA
	PLAY MODE
	REPEAT
	AUTO CUE
	MODE
	LEVEL
	AUTO READY
	INCREMENTAL PLAY
	MONO MIX
	DUCKING
	MODE
	THRESHOLD
	ATTENUATION
	RELEASE TIME
	EOM TRACK
	EOM MEDIA
	RESUME
	TIME SKIP
	FADER DELAY
	OUTPUT RATE
	CALL
REC	
	INPUT SELECT

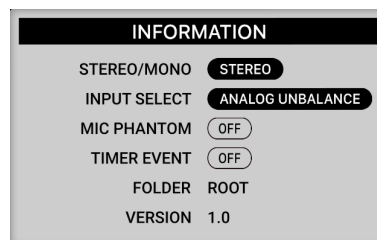
Menu item	
	REC SET LINK
	BAL. INPUT GAIN
	INPUT GAIN Lch
	INPUT GAIN Rch
	INPUT LEVEL
	LINE LEVEL (L)
	LINE LEVEL (R)
	MIC PHANTOM
	PHANTOM(+48V)Lch
	PHANTOM(+48V)Rch
	MIC AGC
	AGC Lch
	AGC Rch
	DYNAMICS
	DYNAMICS Lch
	DYNAMICS Rch
	LOW CUT
	LOW CUT Lch
	LOW CUT Rch
	REC FORMAT
	BACKUP/RELAY MEDIA
	SD1
	SD2
	USB
	WAV SETTING
	FORMAT TYPE
	BIT LENGTH
	MP3 BITRATE
	STEREO/MONO
	FILE NAME
	DITHER
	SRC
	PAUSE MODE
	DIRECT REC
	PRE REC
	SYNC REC
	MODE
	LEVEL
	DELAY
	STOP TIME
	AUTO TRACK
	MODE
	LEVEL
	DELAY
	SIZE
	AUTO MARK
	OVER
	TIME
	UNLOCK

TASCAM TASCAM SS250 CONTROL

Menu item	
	REC
	BOF
TIMER EVENT	
	TIMER EVENT
UTILITY	
	LINK PLAY
	MODE
	TERMINAL
	POWER ON ACTION
	OUTPUT LEVEL
PREFERENCES	
	REFERENCE LEVEL
	BRIGHTNESS
	LCD CONTRAST
	KEYBOARD
REMOTE	
	RS-232C
	BAUD RATE
	PALITY BIT
	STOP BIT
	DATA LENGTH
	RC-3F
MEDIA	
	MEDIA INFORMATION
	CAPACITY
	AVAILABLE
	FOLDER

INFORMATION screen

Swipe up on the home screen to open the **INFORMATION** screen.



STEREO/MONO

When the unit's REC 3 page STEREO/MONO menu item is set to MONO (MIX), "MONO" appears here.

INPUT SELECT

The setting of the the unit's REC 1 page INPUT SELECT menu item appears here.

MIC PHANTOM

The setting of the the unit's REC 1 page MIC PHANTOM menu item appears here.

TIMER EVENT

The unit's TIMER EVENT item on/off setting appears here.

FOLDER/PLAYLIST

If the current playback mode is PLAYLIST, the name of the play-list appears here.

Otherwise, the current folder appears here.

VERSION

This page shows the unit's TASCAM SS250 CONTROL version.

TASCAM

TEAC CORPORATION

Phone: +81-42-356-9143

1-47 Ochiai, Tama-shi, Tokyo 206-8530 Japan

<https://tascam.jp/jp/>

TEAC AMERICA, INC.

Phone: +1-323-726-0303

1834 Gage Road, Montebello, California 90640 USA

<http://tascam.com/>

TEAC UK Ltd.

Phone: +44-8451-302511

2 Huxley Road, Surrey Research Park, Guildford, GU2 7RE, United Kingdom

<http://tascam.eu/>

TEAC EUROPE GmbH

Phone: +49-611-71580

Bahnstrasse 12, 65205 Wiesbaden-Erbenheim, Germany

<http://tascam.eu/>

TEAC SALES & TRADING(SHENZHEN) CO., LTD

Phone: +86-755-88311561~2

Room 817, Block A, Hailrun Complex, 6021 Shennan Blvd., Futian District, Shenzhen 518040, China

<http://tascam.cn/>
